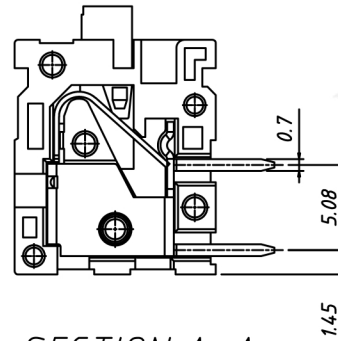


PCB LAYOUT



SECTION A-A



**Material**

Shrapnel: *Stainless steel*

Pin header: *Brass , Tin plated*

Housing: *PA66 , UL94V-0*

**Electrical**

Rated voltage: *150V*

Rated current: *5A*

Wire range: *26 ~ 18AWG 1.0mm<sup>2</sup>*

Contact Resistance: *20 mΩ*

Insulation resistance: *500MΩ/DC500V*

Withstand voltage: *AC1300V / 1 min*

**Mechanical**

Temp. Range: *-40 °C ~ +105 °C*

Soldering: *250°C±5°C for 5S*

Strip length: *9 ~ 10 mm*

**Order Information**

RE - C - 211R - 2.50 - XXP - 4 XX

