

## Omni-direction mini microphone MM4522 Serie

### Specifications:

Sensitivity(1KHz,0dB=1V/Pa): -40±3dB; -42±3dB; -44±3dB

Directivity:Omnidirectional

Impedance:2.2KΩ Max.

Current consumption:0.5mA Max.

Operation voltage:1.0~10V

S/N ratio:60dB Min.

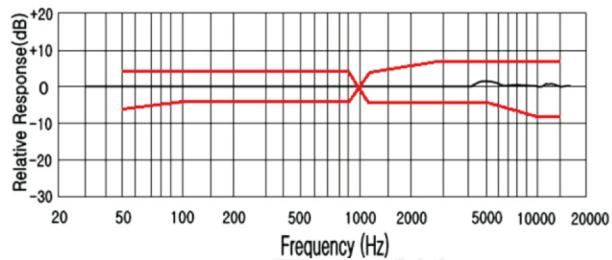
Sensitivity vs. Voltage:3dB Max. at VS=2.0V~1.5V

Std. Test Condition:94dB S.P.L @1KHz VS=2.0V

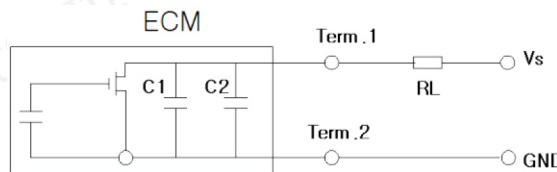
Frequency:20~16,000Hz

Unit:mm

Frequency response



Schematic diagram VS=2V RL=2.2K



### ORDER INFORMATION

Product NO.: RE-B - MM 4522 P - 443

Omni-Direction mini microphone Series

Dimensions

Note: Soldering

P: Pin Type

W: Wire type

Sensitivity