

Unit:mm



Omni-direction mini microphone SMD4013 Serie

Specifications:

Sensitivity(1KHz,0dB=1V/Pa):-42±3dB

Directivity:Omnidirectional

Impedance:2.2KΩ Max.

Current consumption:0.5mA Max.

Operation voltage:1.0~10V

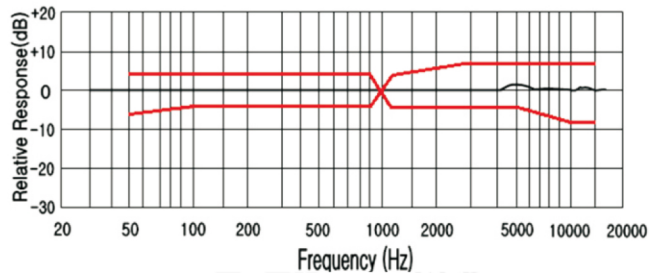
S/N ratio:60dB Min.

Sensitivity vs. Voltage:3dB Max. at VS=2.0V~1.5V

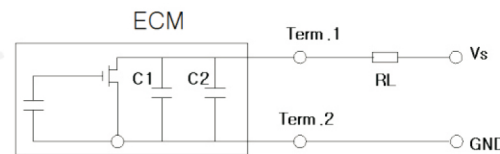
Std. Test Condition:94dB S.P.L @1KHz VS=2.0V

Frequency:20~16,000Hz

Frequency response



Schematic diagram VS=2V RL=2.2KΩ



ORDER INFORMATION

Product NO.: **RE-B - MM 4013 - 423**

Omni-Direction mini microphone Series

Dimensions

Sensitivity