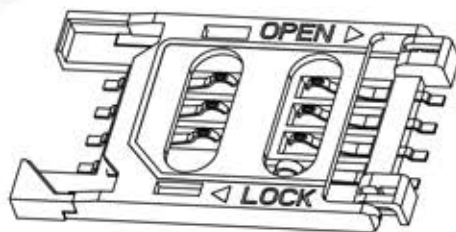
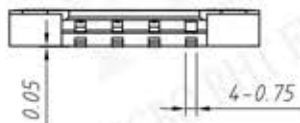
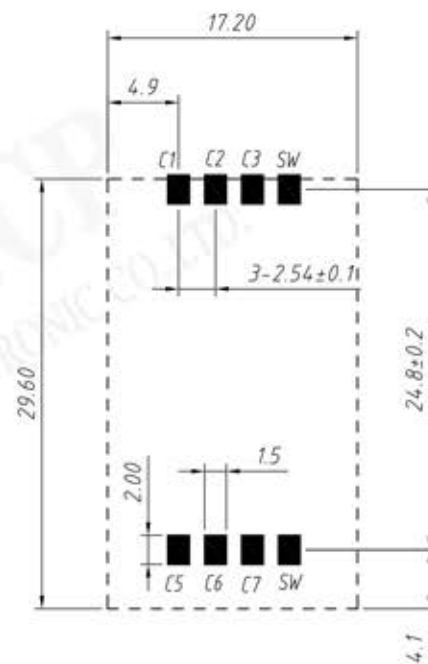
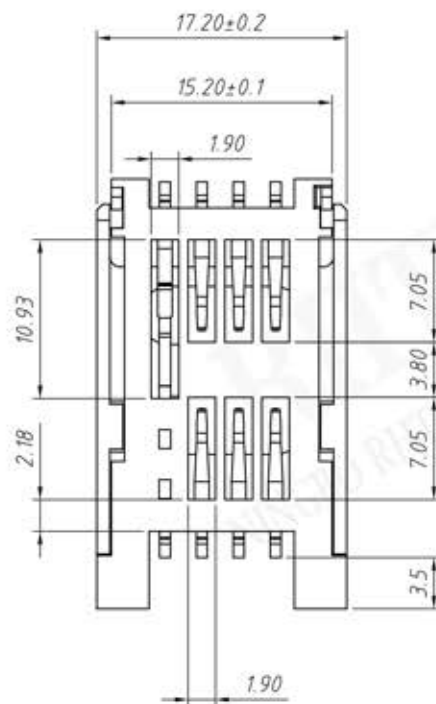
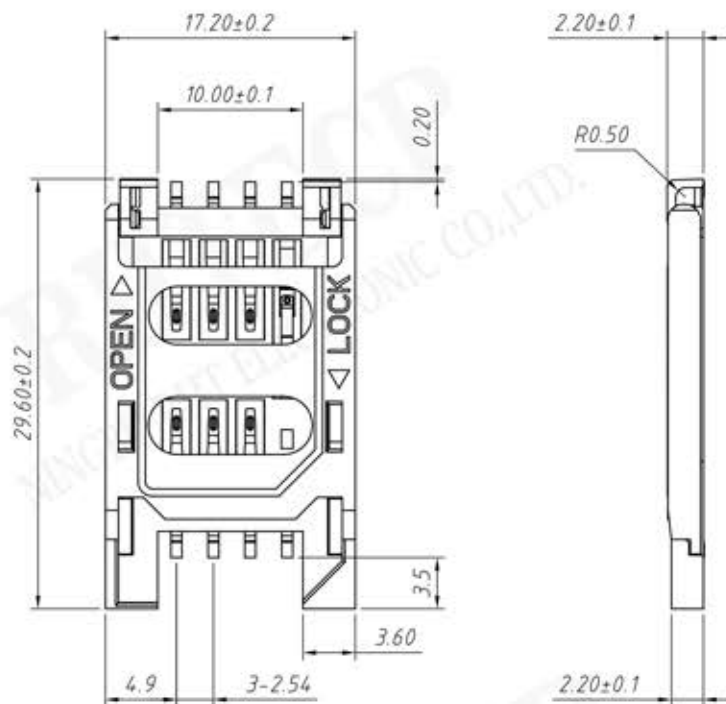


P/N: RE-C-SIM-010B



Material:

Insulator body:LCP. Color:Black

Contact:Phosphor Bronze

Plating:

Finish:Tin Gold or Duplex plated.

Standard:Gold flash all over Nickel

Electrical:

Current Rating:0.5A.

Dielectric Withstanding Voltage:500V AC

Insulation Resistance:1000M Ω Min

Contact Resistance:30m Ω Max.

Life:10000 Cycles

Operating Temperature: -45 $^{\circ}$ C ~ +105 $^{\circ}$ C