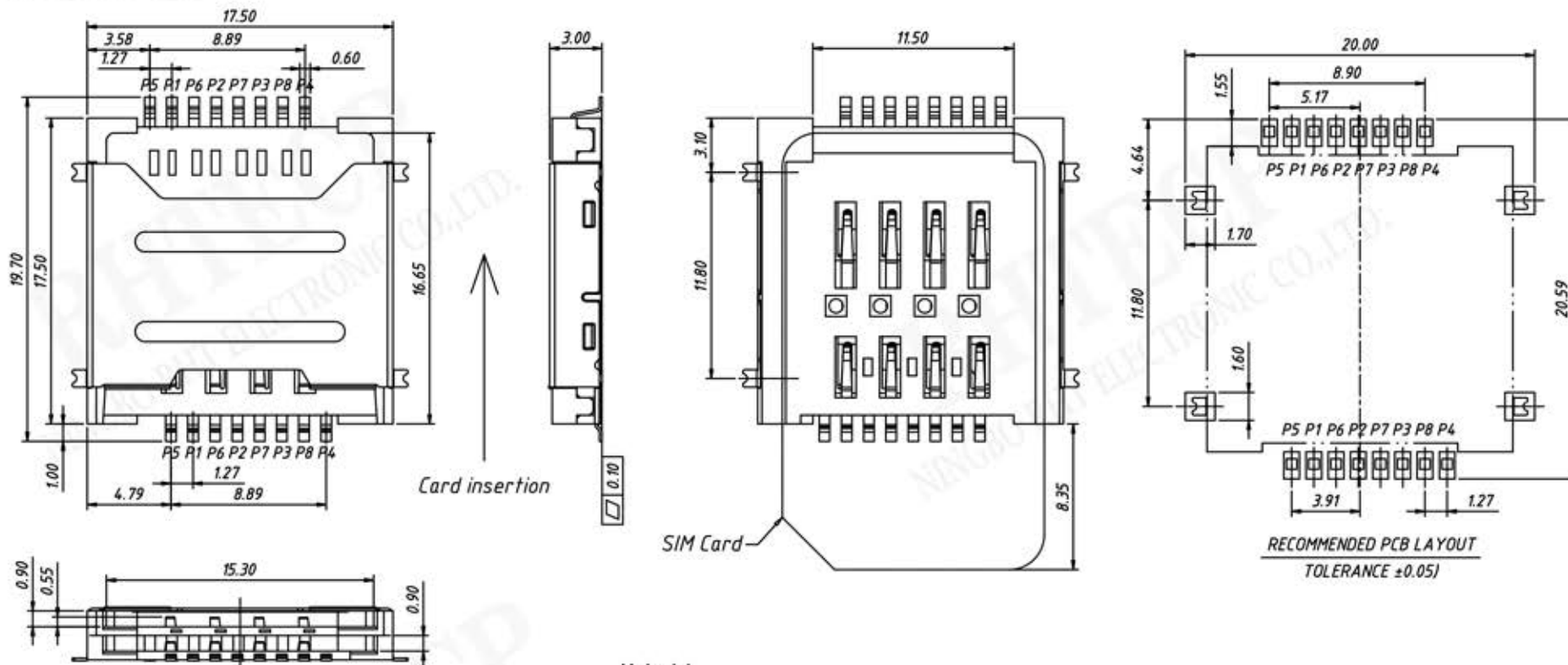


P/N: RE-C-SIM-033



SIM CARD BOTTOM VIEW

- C1-VCC
- C2-RST
- C3-CLK
- C4-Reserved
- C5-GND
- C6-VPP
- C7-I/O
- C8-Reserved

**Material:**

Housing:Hi-Temperature Plastic,UL 94V-0.Black.

Terminal:Copper Alloy.Gold Flash Plated On All Terminal,AND 50u" Min Nickel Underplated On Allcover.

Shell:Stainless Steel.50u" Nickel Underplated On Allcover,Gold Flash On Solder PAD.

**Electrical:**

Current Rating:0.5 A.

Voltage Rating:5.0 vrms.

Insulation Resistance:1000M $\Omega$  Min.At DC500V DC.

Withstanding Voltage:250V AC RMS For 1 Minute.

Contact Resistance:100m $\Omega$  Max.At 10mA/20mV max.

Operating Temperature:-40°C TO +85°C.

Mating Cycles:5000 Insertions.

