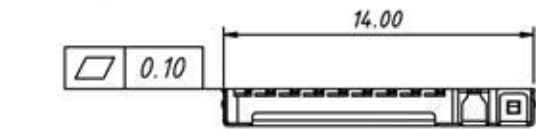
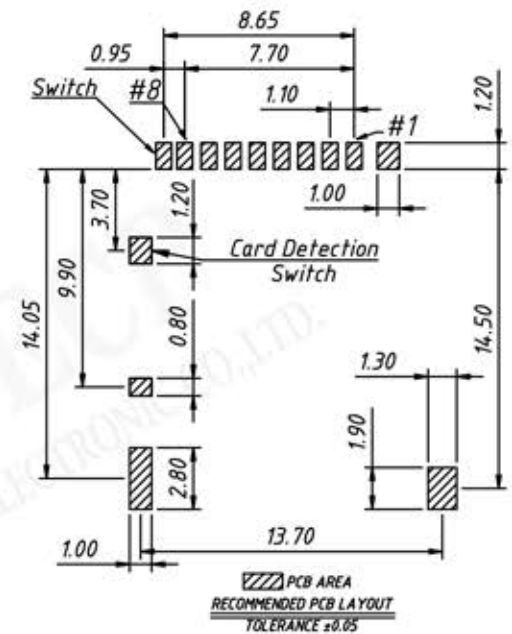
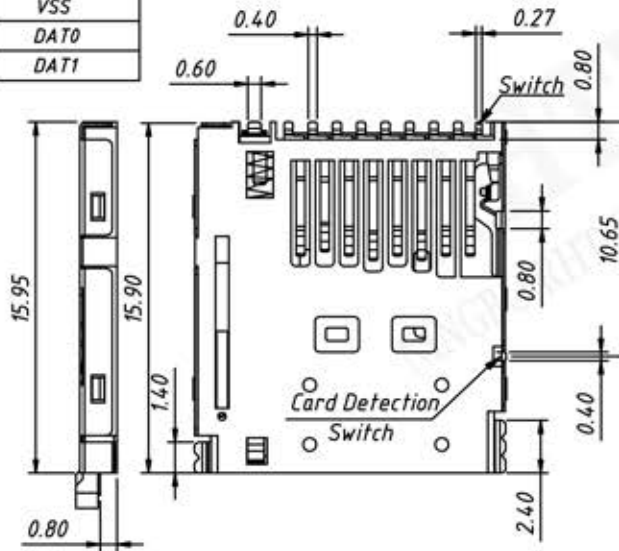
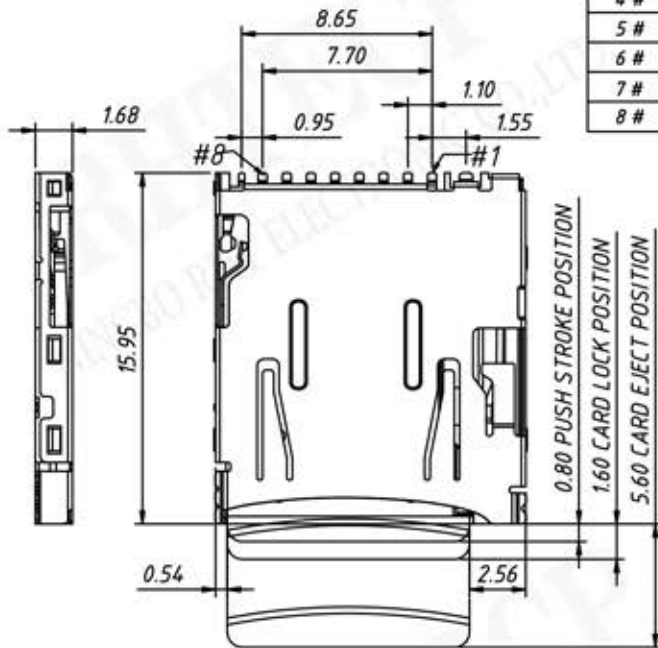


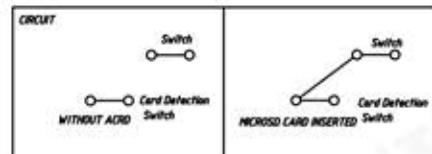
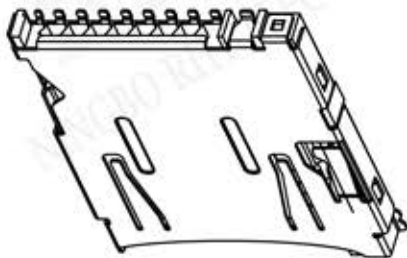
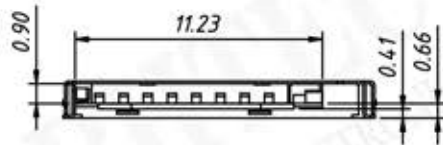
P/N:RE-C-SD114-R



PIN NO.	PIN ASSIGNMENT
1 #	DAT2
2 #	CD/DAT3
3 #	CMD
4 #	VDD
5 #	CLK
6 #	VSS
7 #	DAT0
8 #	DAT1



PCB AREA  
RECOMMENDED PCB LAYOUT  
TOLERANCE ±0.05



Material:

Insulator:Hi-Temperature Plastic,UL94V-0,Black.  
Terminal:Copper Alloy,Gold flash plating on contact area & solder tail.

Shell:Stainless Steel,Nickel underplated on allover,gold flash on solder tail.

Electrical:

Insulation Resistance:1000M $\Omega$  Min./500V DC  
Withstanding Voltage:250V AC/minute.  
Contact Resistance:100m $\Omega$  Max.AT 20mA/20mV Max  
Current Rating:0.5 A  
Voltage Rating:5.0 vrms  
Operating Temp Range:-40°C TO +85°C  
Mating Cycles:5000 Insertions.