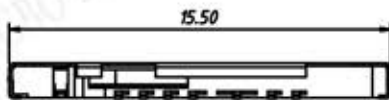
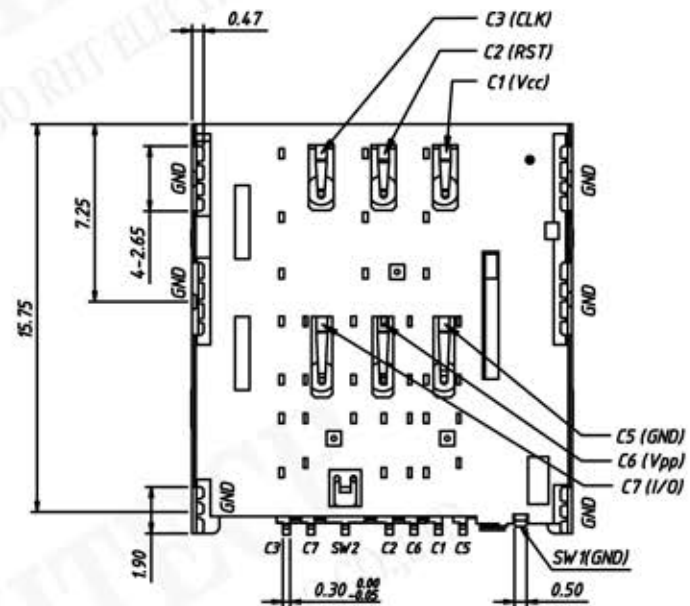
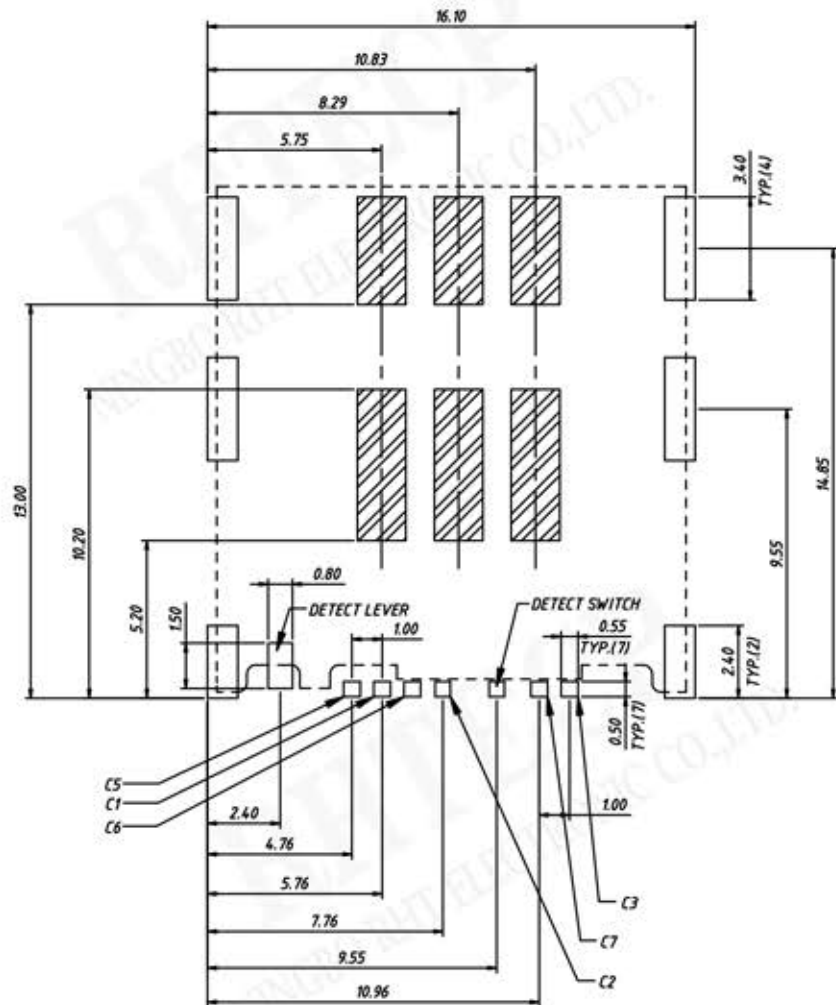


SIM Pin Assignments	
Pin No.	Name
C1	VCC
C2	RST
C3	CLK
C5	GND
C6	Vpp
C7	I/O



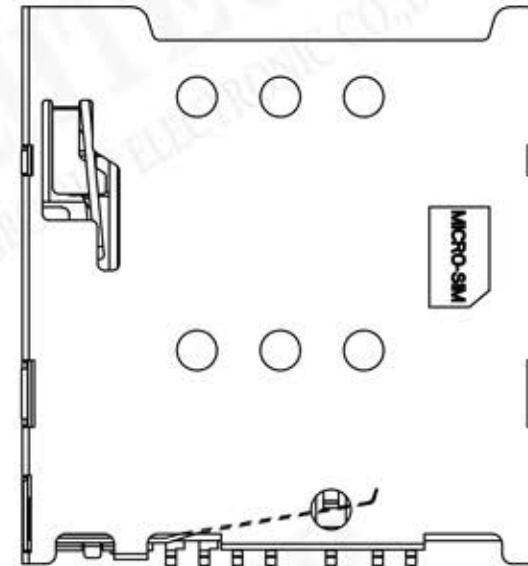


Material:

Insulator: High Temperature Thermoplastic, UL 94V-0

Contact: Copper Alloy, Plated 50 μ Ni Overall Contact Au 1 μ

Shell: SUS, Plated 50 μ Ni Overall, Plated 1 μ Au Selective Contact Area



Electrical Characteristics:

Current rating: 0.5mA AC/DC max.

Ambient Temperature Range: -20 $^{\circ}$ C ~ +60 $^{\circ}$ C

Ambient Humidity Range: 95% RH max

Insulation resistance: 1000M Ω Min

Voltage rating: 125V AC/DC

Storage Temperature Range: -40 $^{\circ}$ C ~ +70 $^{\circ}$ C

Contact resistance: 100m Ω MAX

Mating Cycles: 3000 Min Insertions