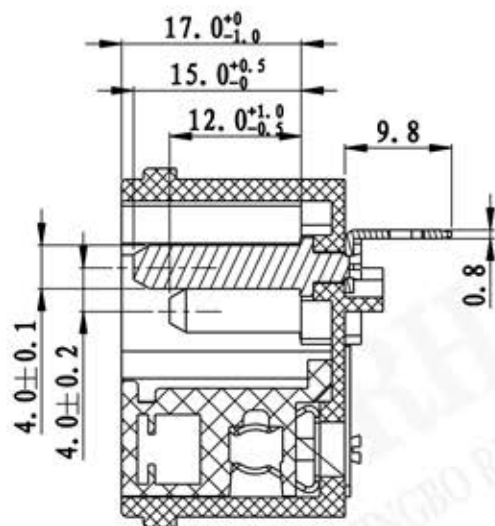
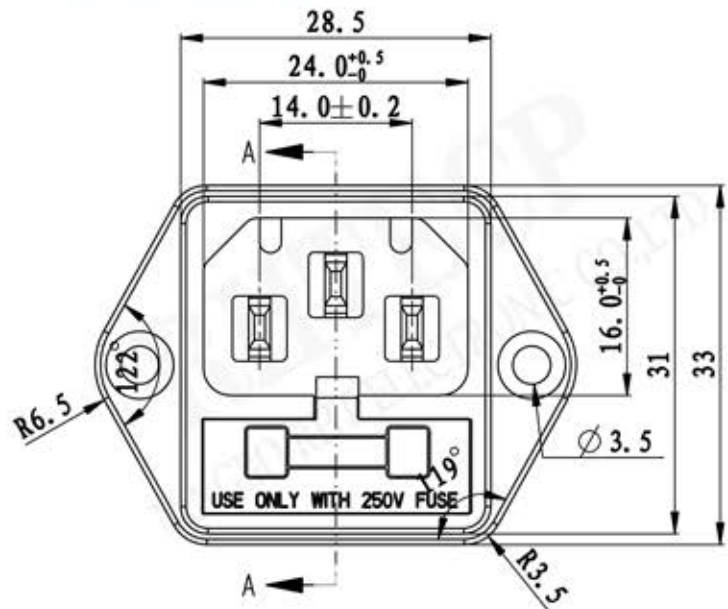
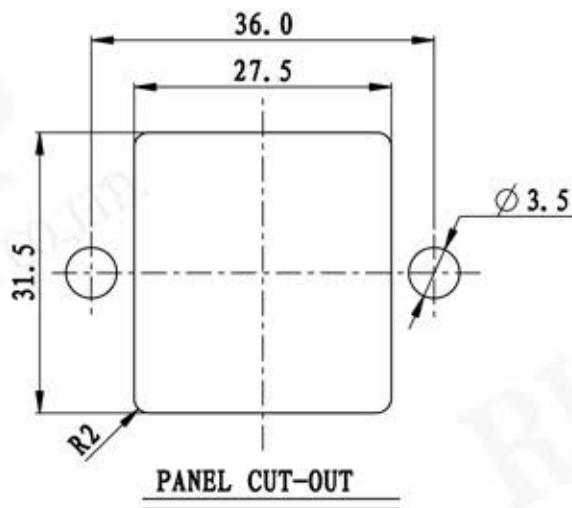
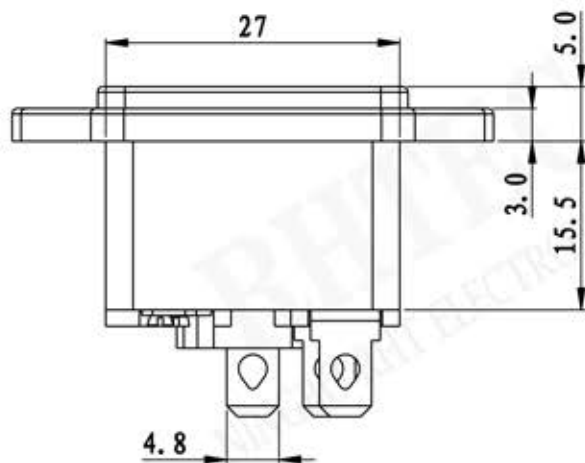
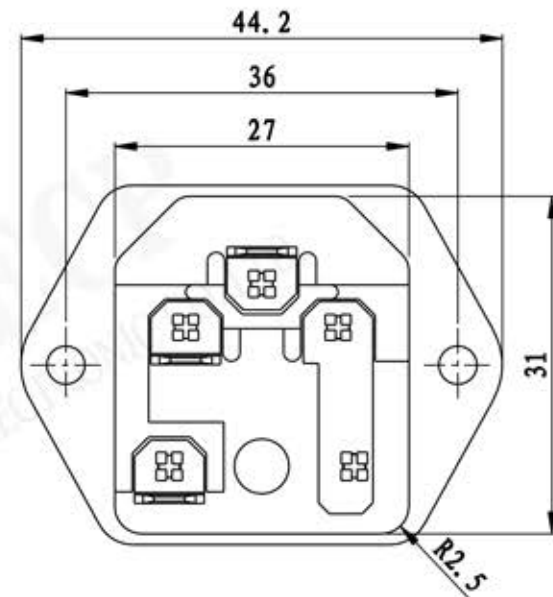


P/N:RE-C-AS-301-11



剖面 A-A



PANEL CUT-OUT

Rating:

10A 250V AC T105 UL cUL
10A 250V AC VDE 3C KC

Fuse: 250V AC 6.3A 2.5W

Insert And Extract Force: 1.36kgf ~ 6.8kgf

Terminal Strength: >80N

Operating Life: >5000 cycles

Withstand Voltage: Between all terminals: 2500VAC (50-60Hz) 1min

Terminals to Base: 3750V AC (50-60Hz) 1min

Leakage Current: 1mA

Insulation Resistance: >100 Ω M 500V DC

Body Material: PBT 94V-2~0