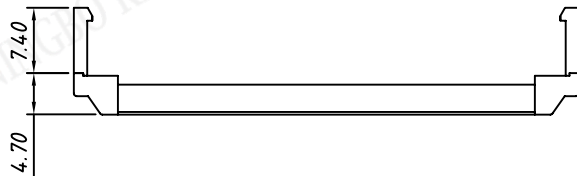
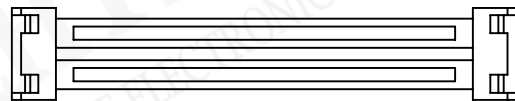
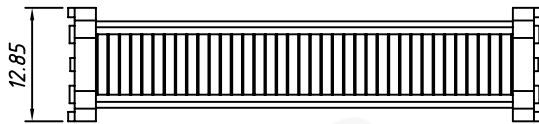
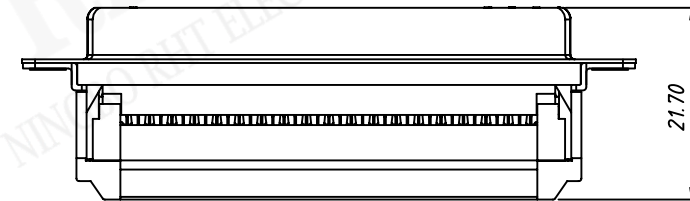
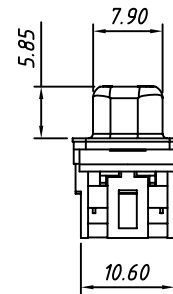
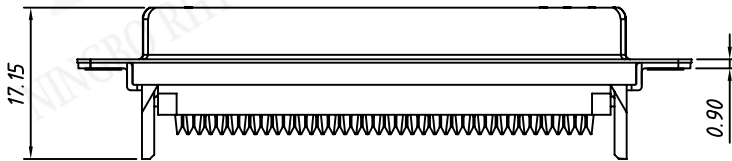


Number of Contacts	DIMENSION		
	A±0.40	B±0.30	C±0.30
09	30.90	24.99	16.30
15	39.20	33.0500 0	24.60
25	53.10	47.04	38.30
37	69.40	63.50	54.80

Material:
 Housing: PBT+30% Glass filled ,UL94V-0
 Contacts: Brass ,Gold Plating
 Shell: Steel, Nickel Plating

Electrical Characteristics:
 Current Rating: 1 AMP
 Insulator Resistance: 1000MΩ Min. at DC 500V
 Withstanding Voltage: 500V AC (rms) for 1 minute
 Contact Resistance: 20mΩ Max. Initial
 Operating Temperature: -40°C ~ +105°C



Order Information

RE - C - 223 - XX - F - L

D-SUB Connector,
IDC Type

XX-No. of 09,15,25,37pins

Connector type: M-Male F-Female

Housing Color: B-Black L-Blue

NINGBO RHT ELECTRONIC CO.,LTD

UNITS:mm

SHEET SIZE:A4

SCALE:---

>0~3

>3~18

>18~50

>50~120

±0.12

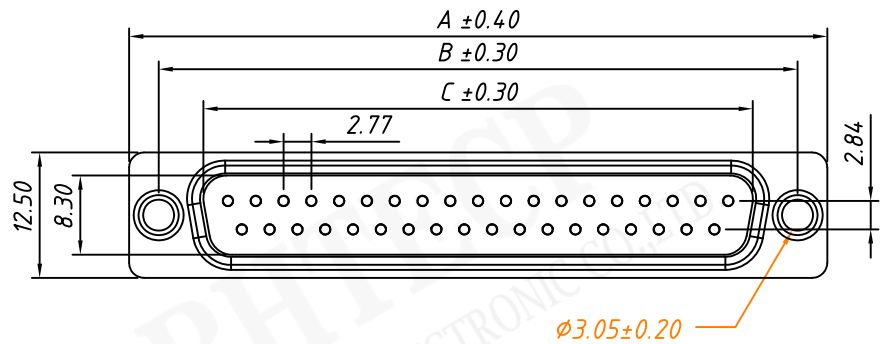
±0.15

±0.3

±0.5

RE-C-223

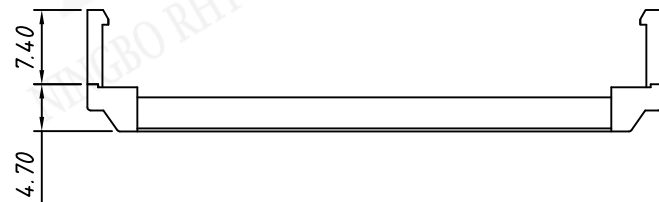
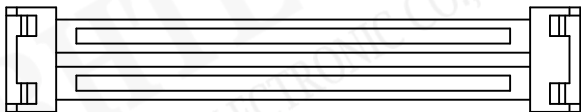
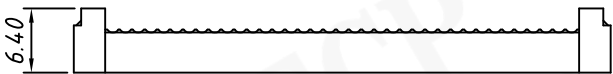
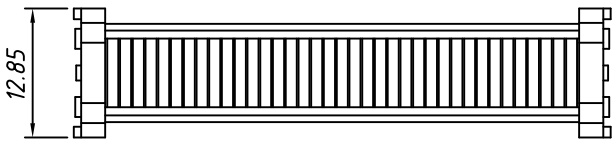
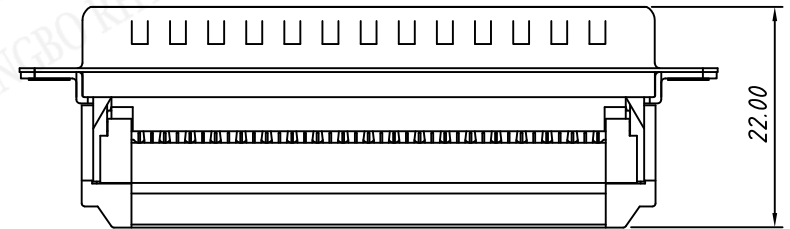
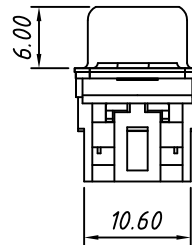
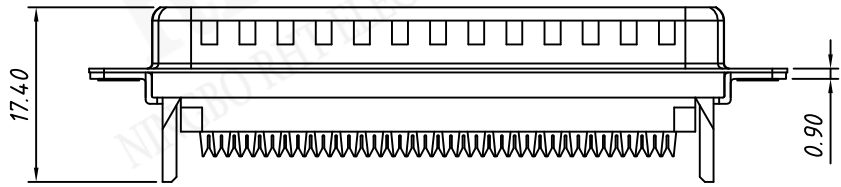
CONNECTORS



Number of Contacts	DIMENSION		
	A±0.40	B±0.30	C±0.30
09	30.90	24.99	16.90
15	39.20	33.05	25.25
25	53.10	47.04	38.96
37	69.40	63.50	55.42

Material:
 Housing: PBT+30% Glass filled,UL94V-0
 Contacts: Brass ,Gold Plating
 Shell: Steel, Nickel Plating

Electrical Characteristics:
 Current Rating: 1 AMP
 Insulator Resistance: 1000MΩ Min. at DC 500V
 Withstanding Voltage: 500V AC (rms) for 1 minute
 Contact Resistance: 20mΩ Max. Initial
 Operating Temperature: -40°C ~ +105°C



Order Information

RE - C - 223 - XX - M - L

D-SUB Connector,
 IDC Type

XX-No. of 09,15,25,37pins

Connector type: M-Male F-Female

Housing Color: B-Black L-Blue