

PCB LAYOUT

**Material:**

Housing: PBT UL94V~0

Contacts: Beryllium copper or Phosphor Bronze

Plating: Au 2u" or Sn over 50u" nickel

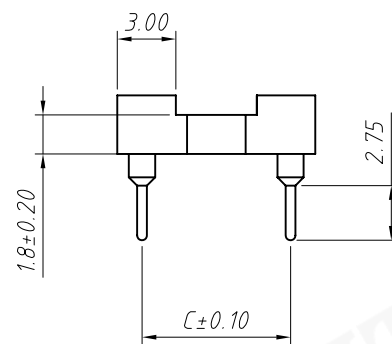
**Electrical Characteristics:**

Current Rating: 3.0 AMP

Insulator Resistance: 1000MΩ min.

Contact Resistance: 20mΩ max.

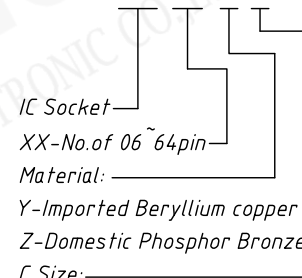
Operating Temperature: -40°C ~ +105°C



Pins	DIM A	DIM B	DIM C	DIM D
06	7.62	5.08	7.62	10.16
08	10.16	7.62	7.62	10.16
10	12.70	10.16	7.62	10.16
14	17.78	15.24	7.62	10.16
16	20.32	17.78	7.62	10.16
18	22.86	20.32	7.62	10.16
20	25.40	22.86	7.62	10.16
24	30.48	27.94	7.62	10.16
28	35.56	33.02	7.62	10.16
20	25.40	22.86	10.16	12.70
22	27.94	25.40	10.16	12.70
24	30.48	27.94	10.16	12.70
28	35.56	33.02	10.16	12.70
24	30.48	27.94	15.24	17.78
28	35.56	33.02	15.24	17.78
32	40.64	38.10	10.16	12.70
32	40.64	38.10	15.24	17.78
36	45.72	43.18	15.24	17.78
40	50.80	48.26	15.24	17.78
42	53.34	50.80	15.24	17.78
48	60.96	58.42	15.24	17.78
50	63.50	60.96	15.24	17.78
52	66.04	63.50	15.24	17.78
50	63.50	60.96	22.86	25.40
52	66.04	63.50	22.86	25.40
64	81.28	78.74	22.86	25.40

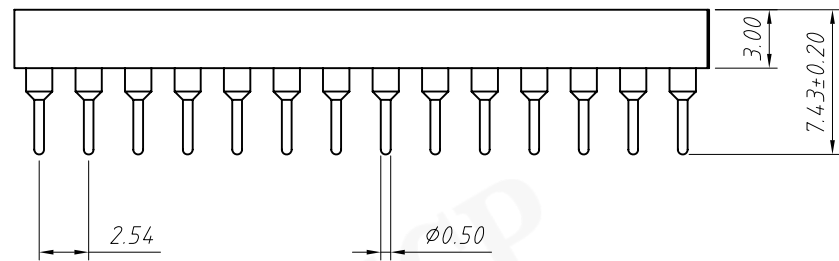
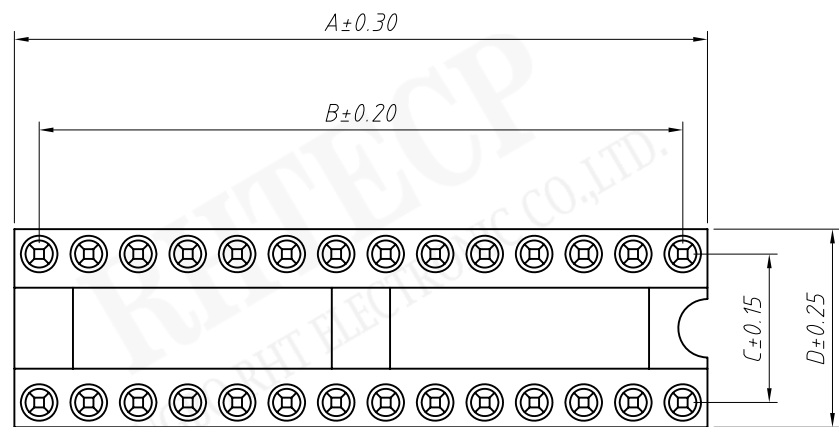
**Order Information:**

RE - C - 217 - XX - Y - 1



1=7.62mm 2=15.24mm

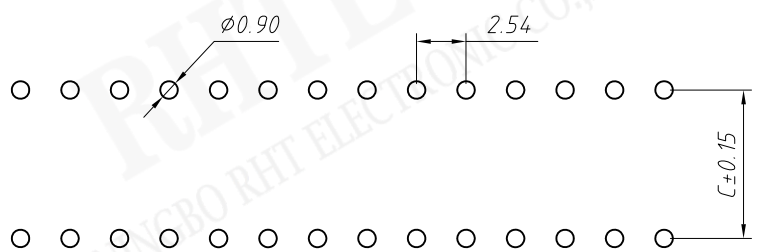
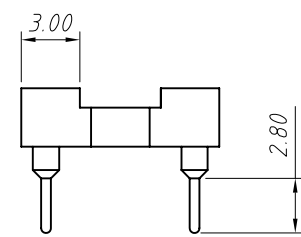
3=10.16mm 4=22.86mm



**Material:**  
 Housing: PBT/PPS, UL 94 V-0  
 Contacts: Beryllium copper or Phosphor Bronze  
 Plating: Au 2u" or Sn over 50u" nickel

**Electrical Characteristics:**  
 Current Rating: 3.0 AMP  
 Insulator Resistance: 1000MΩ min.  
 Contact Resistance: 20mΩ max.  
 Operating Temperature: -40°C ~ +105°C

Pins	DIM A	DIM B	DIM C	DIM D
06	7.62	5.08	7.62	10.16
08	10.16	7.62	7.62	10.16
10	12.70	10.16	7.62	10.16
14	17.78	15.24	7.62	10.16
16	20.32	17.78	7.62	10.16
18	22.86	20.32	7.62	10.16
20	25.40	22.86	7.62	10.16
24	30.48	27.94	7.62	10.16
28	35.56	33.02	7.62	10.16
20	25.40	22.86	10.16	12.70
22	27.94	25.40	10.16	12.70
24	30.48	27.94	10.16	12.70
28	35.56	33.02	10.16	12.70
24	30.48	27.94	15.24	17.78
28	35.56	33.02	15.24	17.78
32	40.64	38.10	10.16	12.70
32	40.64	38.10	15.24	17.78
36	45.72	43.18	15.24	17.78
40	50.80	48.26	15.24	17.78
42	53.34	50.80	15.24	17.78
48	60.96	58.42	15.24	17.78
50	63.50	60.96	15.24	17.78
52	66.04	63.50	15.24	17.78
50	63.50	60.96	22.86	25.40
52	66.04	63.50	22.86	25.40
64	81.28	78.74	22.86	25.40



PCB LAYOUT

**Order Information:**  
 RE - C - 217 - XX - Y - 1 - G3 - PC

XX=No. of 06 ~ 64 pins  
 Material: \_\_\_\_\_  
 Y-Imported Beryllium copper  
 Z-Domestic Phosphor Bronze  
 Row spacing Code: \_\_\_\_\_  
 1=7.62mm 2=15.24mm  
 3=10.16mm 4=22.86mm  
 Plating: Au 3u" \_\_\_\_\_  
 CP=Without Bar \_\_\_\_\_

UNITS:mm	SHEET SIZE:A4	SCALE:---
>0~3	>3~18	>18~50
>50~120		
±0.12	±0.15	±0.3
		±0.5