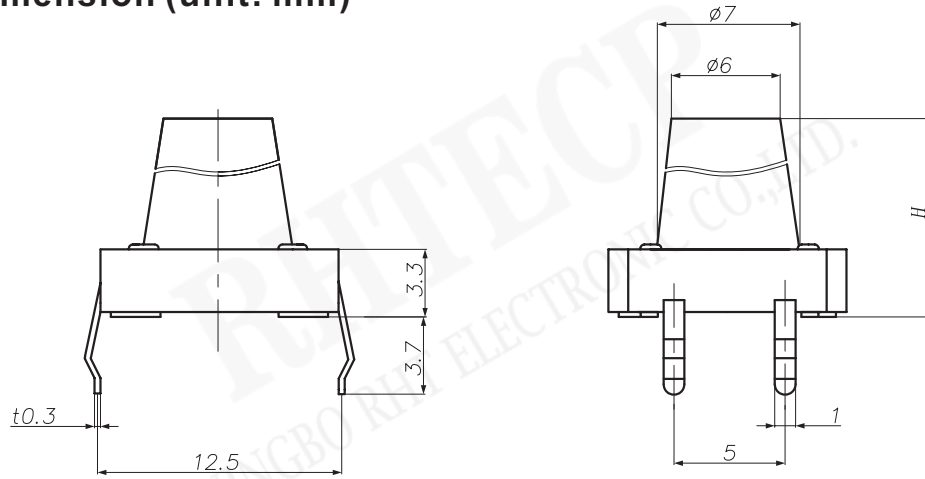


Dimension (unit: mm)



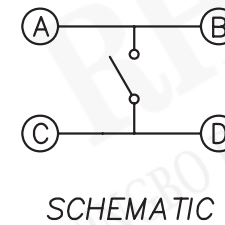
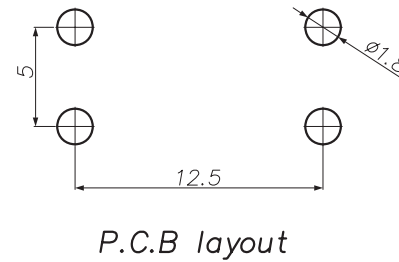
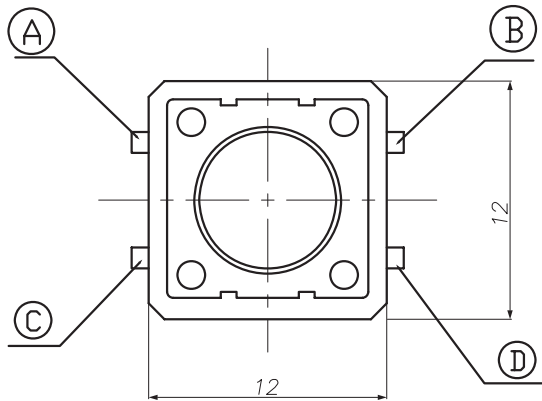
H
4.3
4.5
5.0
7.0
7.5
8.0
8.5
9.0
10.0
11.0
12.0
13.0
15.0
18.0

Tact Switch Series

RE-S-TS1202 12x12 Tact Switch Series

ELECTRICAL

1. Rating: 50mA 12VDC
2. Contact Resistance : 50m Ω m ax(initial)
3. Insulation Resistance: 100M Ω (minDC 250V)
4. Dielectric Strength : AC250V(50/60Hz for 1minute)
5. Electrically Life: 100000cycles
6. Environment temperature:-20°C~+70°C
7. Operating Force: 180/250(\pm 30gf)
8. Seal temperature:260°C~ 280°C



ORDER INFORMATION

RE-S-TS1202 - 4.3 - 180

Series No. _____

Operating Force : 180~250gf
 Hight: 4.3mm/4.5mm/5.0mm/7.0mm/
 7.5mm/8.0mm/8.5mm/9.0mm/
 10.0mm/11.0mm/12.0mm/
 13.0mm/15.0mm/18.0mm